

Efficacy of Education through Counselling in Managing Diabetes Mellitus: A Study in Eastern India

Sarbari Dasgupta¹, Sulagna Ray²

¹ PhD Scholar, Department of Health Science and Management, Seacom Skill University, Kendradangal, Birbhum – 731236, West Bengal, India

sarbari.tmsl@gmail.com

²Department of Food and Nutrition, Seacom Skill University, Kendradangal, Shantiniketan, Birbhum – 731236, West Bengal, India
sulagnain@gmail.com

Abstract: *The objective of the study to examine the efficacy of education through counselling among diabetes mellitus (DM) patients of eastern India, which prevents the biochemical profiles, and obesity parameter. A total 50 participants were randomly selected, who visited the endocrinology outpatient department of the hospital in Kolkata. All the data have been collected from clinical records for baseline data of biochemical profiles such as fasting plasma glucose (FPG), post - prandial plasma glucose (PPPG) and glycated haemoglobin (HbA1c), and obesity parameter viz. body mass index (BMI) among DM subjects. The education was delivered through counselling and compared between baseline versus 3 months and 6 months followed up. The biochemical profiles viz. FPG, PPPG and HbA1c, as well as BMI values were found significantly ($P < 0.001$ and $P < 0.01$) decreasing trend during 3 months and 6 months follow up after education to DM subjects. In the present study, for 6 months follow up, the principal component analysis (PCA) indicated the PC - 1 (94.822%) relatively higher value of positive loading for FBG. The present study concludes that education through counselling was observed efficacious for the prevention of DM among patients of eastern India. The present findings in its first time in which the association of parameters found to be related with the PCI regarding the biochemical and obesity parameters.*

Keywords: Diabetes mellitus, Biochemical parameters, Obesity parameter, Education through counselling, Diabetic management

1. Introduction

Many studies reported that lifestyle risk factors such as inadequate physical activity, abnormal dietary habits, adiposity/obesity, consumption of alcohol, smoking habits, etc. in combinations or individually increased the DM prevalence. [1 - 8]

The management of lifestyle risk factors reduced the prevalence of DM when patients are educating through counseling for the usage of complimentary medicines, [9] performing physical activity/exercise, [10, 11] proper diet, [3, 8] moderate alcohol consumption, [12] non - smoking activity, [11] etc. Moreover, an earlier study established that healthy lifestyle control reduced the prevalence of DM. [13] An earlier study by Dasgupta and Ray, [14] health awareness is necessary among DM patients, and it was observed a close relationship between demographic and socioeconomic profiles along with biochemical and obesity parameters. In other parts of the India and globe, few studies have reported the efficacy of education through counselling in DM patients [15 - 19] but it is lacking in our study area.

The objective of the present study was to determine the efficacy of education through counselling among diabetes mellitus patients of eastern India, which prevents the biochemical profiles, and obesity parameter.

2. Materials and Methods

The study was based on a total number of 50 DM patients, who visited the endocrinology outpatient department of hospital, Kolkata, eastern part of India. All the data were collected from clinical records to know baseline data of biochemical profiles such as fasting plasma glucose (FPG), post - prandial plasma glucose (PPPG) and glycated haemoglobin (HbA1c), and obesity parameter viz. body mass index (BMI) among DM patients. Finally, educated through counselling and compared between followed up 3 months and 6 months, respectively for the prevention of DM.

The data were statistically analysed and compared above - mentioned four parameters between baseline versus 3 months and 6 months follow up data by using PAleontological Statistics (PAST, version 3.26) tool. [20] Continuous variables were expressed as mean (M) \pm standard deviation (SD) for comparative analysis with a student 't' test. The principal component analysis (PCA) was also performed by using PAST tool to reduce the variables into a smaller number of uncorrelated predictor variables. [20] Individual participant principal component (PC) scores were comprised from their factors loadings for four parameters and used to create PCA of the 4 factors in each case. The statistically significant level at $P < 0.05$ was considered.

3. Results

Table 1 evaluates mean comparison of biochemical and obesity parameters after long - term education among diabetic patients. After education, 3month follow up

observed a decreasing trend for all parameters without significant change FPG (P= 0.192), PPPG (P=0.187), HbA1c (P=0.072) and BMI (P=0.114) while all biochemical parameters as well as obesity parameter were significantly (P<0.001 and P<0.01) reduced after 6months follow up.

Table 1: Mean comparison of biochemical and obesity parameters after long - term education among diabetic patients

Parameters	Baseline (Mean \pm SD, n = 50)	3months follow up (Mean \pm SD, n = 50)	6months follow up (Mean \pm SD, n = 50)
FPG (mg/dl)	291.6 \pm 71.6	270.1 \pm 65.0	244.9 \pm 63.6*
PPPG (mg/dl)	330.9 \pm 68.5	313.0 \pm 66.1	284.2 \pm 62.4*
HbA1c (%)	10.5 \pm 1.7	9.9 \pm 1.6	9.3 \pm 1.4*
BMI (Kg/m ²)	26.7 \pm 3.5	25.6 \pm 3.4	24.6 \pm 3.2**

FBG = Fasting plasma glucose; PPBG = Post – prandial plasma glucose HbA1c = Glycated haemoglobin; BMI = Body mass index; *P<0.001; **P<0.01

The principal component analysis (PCA) was performed based on biochemical and obesity parameters after long - term education among diabetic patients (Table 2).

In the baseline patients, the PC - 1 (91.199% of the original variation elucidated) observed relatively higher value of positive loading for FPG followed by PPPG, while lower value of positive loading for HbA1c and BMI (Figure1 and 2).

In the 3months follow up patients, the PC - 1 (92.778% of the original variation elucidated) observed relatively higher value of positive loading for FPG followed by PPPG, while lower value of positive loading for HbA1c and BMI (Figure3 and 4).

In the 3months follow up patients, the PC - 1 (94.822% of the original variation elucidated) observed relatively higher value of positive loading for FPG followed by PPPG, while lower value of positive loading for HbA1c and BMI (Figure5 and 6).

Table 2: PCA for biochemical and obesity parameters after long - term education among diabetic patients

	Eigen value	% variance
Baseline PC		
1	8968.62	91.199
2	852.315	8.667
3	11.6145	0.1181
4	1.52244	0.015481
3months follow up PC		
1	7987.68	92.778
2	609.284	7.0769
3	11.0385	0.12821
4	1.46835	0.017055
6months follow up PC		
1	7533.34	94.822
2	400.4	5.0399
3	9.54189	0.1201
4	1.39356	0.017541

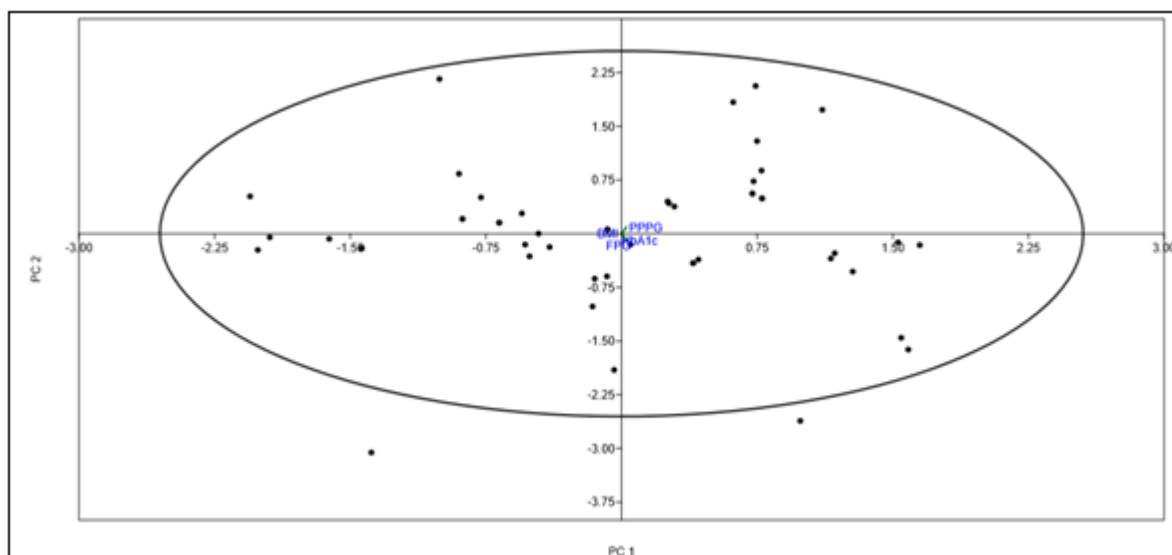


Figure 1: PCA for baseline parameters of diabetic patients

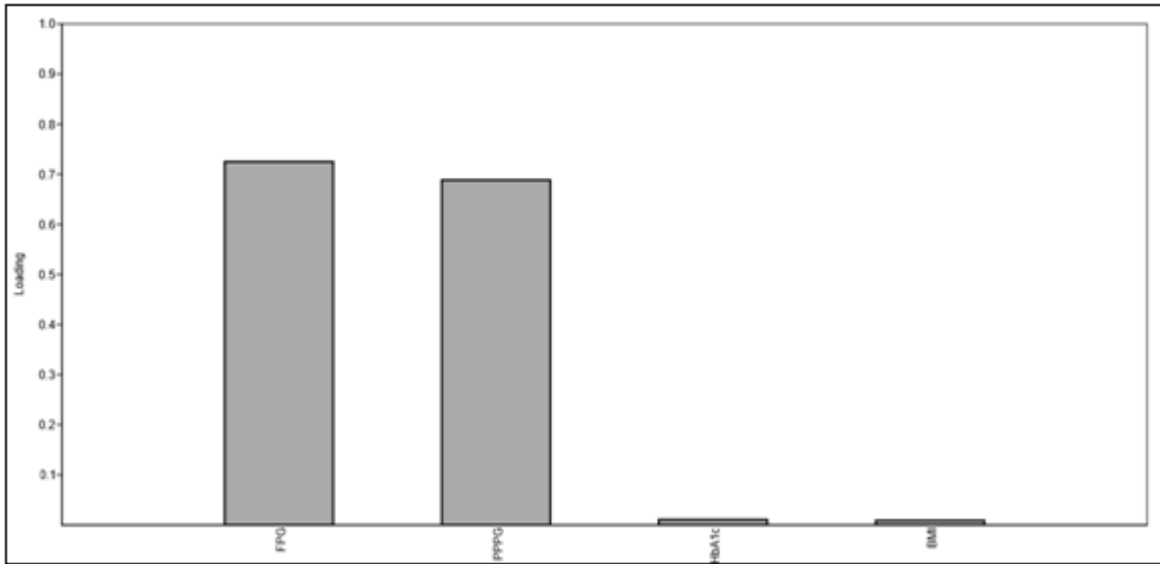


Figure 2: Loading plot for baseline parameters

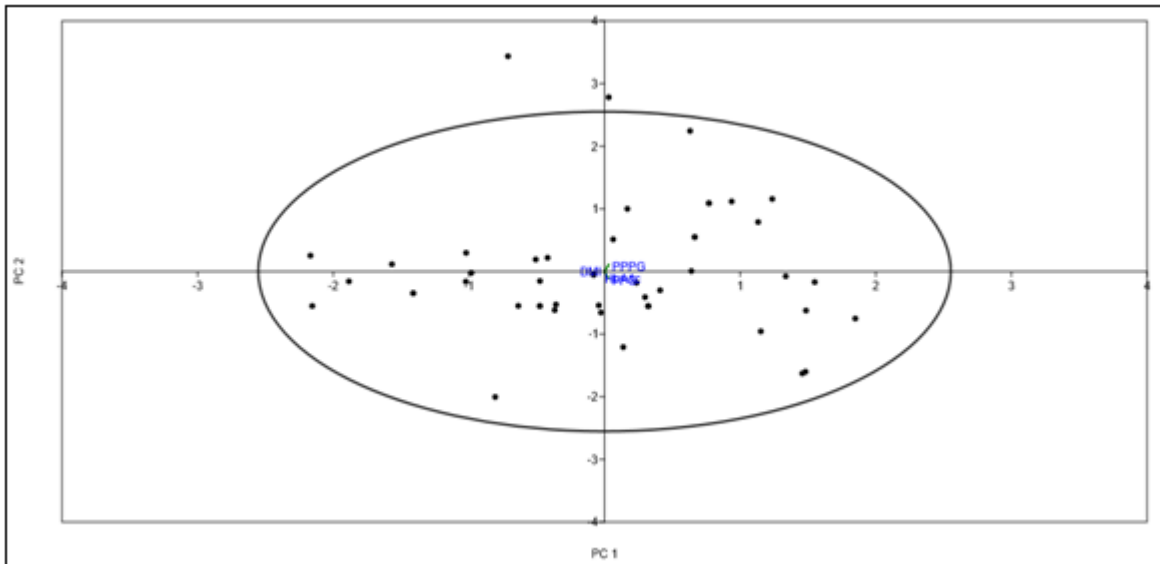


Figure 3: PCA for 3months follow up parameters after education of diabetic patients

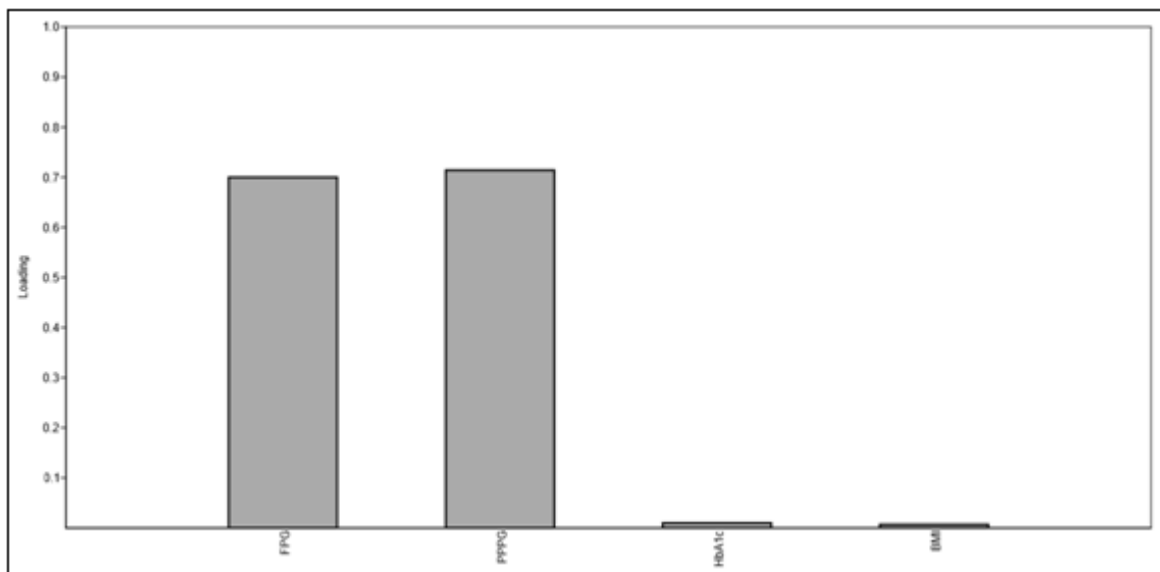


Figure 4: Loading plot for 3 months follow up parameters

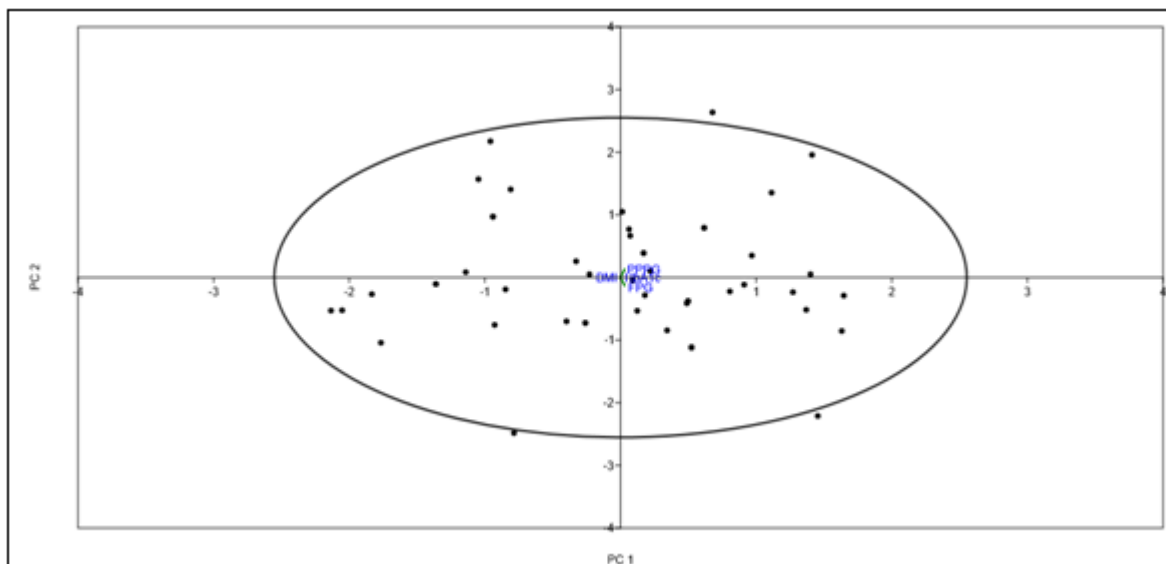


Figure 5: PCA for 6months follow up parameters after education of diabetic patients

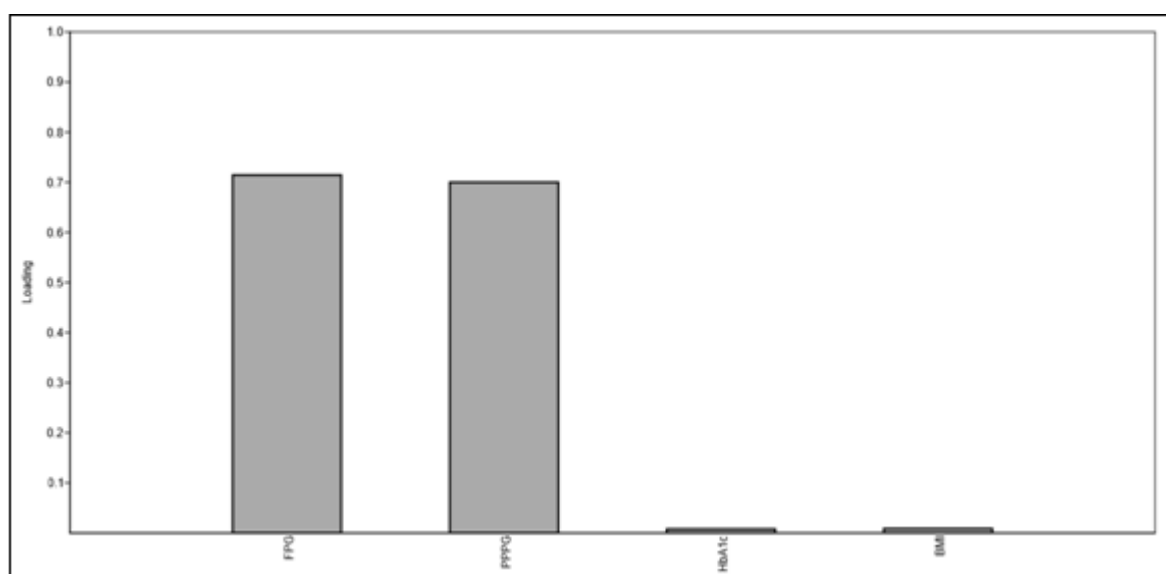


Figure 6: Loading plot for 6months follow up parameters

4. Discussion

Generally, any health education is an important intervention in preventing the general masses from non - communicable diseases. [16, 17, 18] The participant's knowledge improved significantly after face - to - face 30 minutes' session on diabetes. [16] Earlier research suggested that the timely information could be prevented a greater number of DM - related risk factors among the patients. Hence, the present study has highlighted the efficacy of education through counselling among DM patients in eastern India is lacking.

After education, 3month follow up observed a decreasing trend for all biochemical and obesity parameters without significant change FPG ($P= 0.192$), PPPG ($P=0.187$), HbA1c ($P=0.072$) and BMI ($P=0.114$) while all these parameters were significantly ($P<0.001$ and $P<0.01$) reduced after 6months follow up when compared to baseline data. These findings were supported by the interventional studies conducted in similar settings in other parts of the India as well as worldwide. [16 - 19]

Moreover, the present findings in its first - time endeavour to know the association of above - mentioned parameters found to be related with the PC1 regarding 3months and 6months follow up after education among diabetic patients, which are lacking in the health management arena of eastern India. From earlier study, it is well - known fact that the study of components variation though PCA could be an important tool in clinical research to understand easily PCs for four parameters, which may be reduced in a set of intercorrelated variables into a few dimensions and gathered of a large amount of the variability of the original variables. [21] Among several PCs, the PC1 has the largest possible variance to detect among all components that are chosen to characterize the correlated variables. [22] An earlier meta - analysis reported that passive smoking is a risk factor of diabetes even in those who were not themselves active smokers. [23] Wang et al. [24] studied PCA of nutrition factors and physical activities with diabetes, which help for the lifestyle risk management among DM patients.

5. Conclusion

The present study concludes that education through counselling was observed efficacious for the prevention of DM among patients of eastern India. The present findings in its first time in which the association of parameters found to be related with the PCI regarding the biochemical and obesity parameters.

References

- [1] Colditz GA, Willett WC, Stampfer MJ, Manson JE, Hennekens CH, Arky RA, et al. Weight as a risk factor for clinical diabetes in women. *Am J Epidemiol.*1990; 132 (3): 501 - 13.
- [2] Carey VJ, Walters EE, Colditz GA, Solomon CG, Willett WC, Rosner BA, et al. Body fat distribution and risk of non-insulin - dependent diabetes mellitus in women: the Nurses' Health Study. *Am J Epidemiol.*1997; 145 (7): 614 - 9.
- [3] Hu FB, Manson JE, Stampfer MJ, Colditz G, Liu S, Solomon CG, et al. Diet, lifestyle, and the risk of type 2 diabetes mellitus in women. *N Engl J Med.*2001; 345 (11): 790 - 7.
- [4] Salmerón J, Hu FB, Manson JE, Stampfer MJ, Colditz GA, Rimm EB, et al. Dietary fat intake and risk of type 2 diabetes in women. *Am J Clin Nutr.*2001; 73 (6): 1019 - 26.
- [5] Koppes LL, Dekker JM, Hendriks HF, Bouter LM, Heine RJ. Moderate alcohol consumption lowers the risk of type 2 diabetes: a meta - analysis of prospective observational studies. *Diabetes Care.*2005; 28 (3): 719 - 25.
- [6] Wang Y, Rimm EB, Stampfer MJ, Willett WC, Hu FB. Comparison of abdominal adiposity and overall obesity in predicting risk of type 2 diabetes among men. *Am J Clin Nutr.*2005; 81 (3): 555 - 63.
- [7] Willi C, Bodenmann P, Ghali WA, Faris PD, Cornuz J. Active smoking and the risk of type 2 diabetes: a systematic review and meta - analysis. *JAMA.*2007; 298 (22): 2654 - 64.
- [8] Mozaffarian D, Kamineni A, Carnethon M, Djoussé L, Mukamal KJ, Siscovick D. Lifestyle risk factors and new - onset diabetes mellitus in older adults: the cardiovascular health study. *Arch Intern Med.*2009; 169 (8): 798 - 807.
- [9] Abahussain NA, El - Zubier AG. Diabetes knowledge among self reported diabetic female teachers: Al - khobar, Saudi Arabia. *J Family Community Med.*2005; 12 (1): 43 - 48.
- [10] Lynch J, Helmrich SP, Lakka TA, Kaplan GA, Cohen RD, Salonen R, et al. Moderately intense physical activities and high levels of cardiorespiratory fitness reduce the risk of non-insulin - dependent diabetes mellitus in middle - aged men. *Arch Intern Med.*1996; 156 (12): 1307 - 14.
- [11] Bassuk SS, Manson JE. Epidemiological evidence for the role of physical activity in reducing risk of type 2 diabetes and cardiovascular disease. *J Appl Physiol.*2005; 99 (3): 1193 - 1204.
- [12] Koppes LL, Dekker JM, Hendriks HF, Bouter LM, Heine RJ. Moderate alcohol consumption lowers the risk of type 2 diabetes: a meta - analysis of prospective observational studies. *Diabetes Care.*2005; 28 (3): 719 - 725.
- [13] Koley M, Saha S, Arya JS, Choubey G, Ghosh S, Chattopadhyay R, et al. Knowledge, attitude, and practice related to diabetes mellitus among diabetics and nondiabetics visiting homeopathic hospitals in West Bengal, India. *J Evid Based Complementary Altern Med.*2016; 21 (1): 39 - 47.
- [14] Dasgupta S, Ray S. Study of health awareness status among diabetes patients in eastern India: A relationship between demographic and socioeconomic profiles along with biochemical and obesity parameters. *Asian Pac J Health Sci.*2022; 9 (4): 1 - 6.
- [15] Weitgasser R, Clodi M, Cvach S, Riedl M, Lechleitner M, Ludvik B. Diabetesschulung und - beratung bei Erwachsenen mit Diabetes (Update 2019) [Diabetes education and counselling in adult patients with diabetes (Update 2019)]. *Wiener klinische Wochenschrift*, 2019; 131 (Suppl 1): 110 - 14.
- [16] Chawla SPS, Kaur S, Bharti A, Garg R, Kaur M, Soin D, et al. Impact of health education on knowledge, attitude, practices and glycemic control in type 2 diabetes mellitus. *Journal of Family Medicine and Primary Care.*2019; 8 (1): 261 - 268.
- [17] Kumar R, Rehman S, Baloch GM, Vankwani M, Somrongthong R, Pongpanich S. Effectiveness of health education intervention on diabetes mellitus among the teachers working in public sector schools of Pakistan. *BMC Endocr Disord.*2022; 22: 194.
- [18] Martiskainen TM, Lamidi ML, Venojärvi M, Tikkanen H, Laatikainen T. Effectiveness of physical activity counselling provided for people with type 2 diabetes mellitus in primary healthcare in North Karelia, Finland: a register - based evaluation study. *BMJ Open.*2022; 12 (7): e058546.
- [19] Griaude DH, O'Brien A, Yancy WS Jr, Richardson CR, Krinock J, DeJonckheere M, et al. Testing a very low - carbohydrate adaptation of the Diabetes Prevention Program among adults with prediabetes: study protocol for the Lifestyle Education about prediabetes (LEAP) trial. *Trials.*2022; 23 (1): 827.
- [20] Hammer Ø, Harper DAT, Ryan PD. Past: Paleontological statistics software package for education and data analysis. *Palaeontologia Electronica.*2001; 4 (1): 9.
- [21] Burt C. Factor analysis and canonical correlations. *Br J of Psychol.*1948; 1: 95 - 106.
- [22] Zhang Z, Castelló A. Principal components analysis in clinical studies. *Ann Transl Med.*2017; 5 (17): 351.
- [23] Wei X, E M, Yu S. A meta - analysis of passive smoking and risk of developing type 2 diabetes mellitus. *Diabetes Res Clin Pract.*2015; 107: 9 - 14.
- [24] Wang KS, Liu Y, Xie X, Gong S, Xu C, Sha Z. Principal component regression analysis of nutrition factors and physical activities with diabetes. *J Biom Biostat.*2017; 8: 364.